



*ELECTRIC OF CHINA-SCIENCE CHINA*

## 集团概况

CC General

上海中科电气（集团）有限公司是以高低压输配电电气成套设备、海洋工程设备、医疗设备、通讯网络机柜等制造销售和电子商务为主导，集科研、生产、贸易、金融为一体的现代大型企业集团。

集团总部坐落于上海四川北路1666号高宝新时代广场，在浦东建有15万平方米的高科技工业园区。集团拥有上海人民电力设备股份有限公司、上海人民低压电器有限公司、上海虹口中科小额贷款股份有限公司、上海中科投资有限公司等核心企业12家、成员企业80多家、配套协作企业300多家，在全国设有500多家销售机构。集团拥有国际先进的日本AMADA数控钣金加工生产线、日本OTC公司焊接机器人、瑞士激光切割设备、德国TOX钣金铆接机及立式加工中心等一系列现代化的生产设备。优质高效完成了中石化、中石油、大庆油田、上海航天城、宝钢集团、上海石洞口电厂、上海虹桥机场、北京印钞厂、钓鱼台国宾馆、广州大学城、郑州国际会展中心、西气东输工程、上海世博会演艺厅等上千个国家大中型工程项目。

集团是国家甲级机电设备成套单位、国家经贸委城乡电网改造推荐企业、国家电力公司、水利部、煤炭部定点入网企业，中国国际招标网等国家级专业组织机构的成员单位。荣获全国守合同重信用单

位、全国民营科技企业创新奖、中国优秀民营科技企业、上海市高新技术企业、上海市科技小巨人企业、上海科技企业创新奖、上海市重合同守信用百家优秀企业、上海市合同信用AAA级单位、上海市大企业集团、上海市先进企业、上海市实施卓越绩效模式先进企业。董事长兼总裁陈庆钱荣获上海市优秀中国特色社会主义建设者、中国优秀民营科技企业企业家、上海实施发明成果优秀企业家等称号。

集团始终把质量作为企业的生命线，规范推进全面质量管理和卓越绩效，不断完善质量管理体系，在同行中率先通过ISO9001质量管理体系认证、ISO14001环境管理体系认证、GB/T28001—2001职业健康安全管理体系认证、产品的CCC认证。产品连续多年被评为上海市名牌产品、上海市电器行业名优产品、企业技术中心被上海市经委认定为“上海市企业技术中心”。

集团积极拓展国际合作，与美国通用电气（GE）公司、美国应用材料公司、法国施耐德、瑞士ABB、中微半导体公司、挪威康士伯船舶公司、SK公司、日本崎崎电气公司等国内外大企业等世界著名企业签约，建立了市场、技术、产品等全方位战略合作关系。

集团积极参加社会慈善事业，多次为市、区“4050”再就业工程、扶贫助学助残、四川汶川大地震奉献爱心。多次获虹口区光彩事业先进单位及上海市慈善基金会奖牌。

集团坚持“以人为本，科技领先”的经营理念，加快实现管理现代化、产品智能化和经营国际化步伐，进一步开创科技创新的新局面，为企业又好又快发展奠定坚实基础，为上海经济的腾飞做出新贡献。

## ECC Brief

As a modern comprehensive large size enterprise group, Shanghai China-science Electric (Group) Co., Ltd (hereinafter referred to as ECC) takes manufacturing and selling high and low voltage transmission and distribution switchgears and controlgears, marine apparatus, medical devices and communication network cabinets, and engages in E-business as a lead, and integrates them with scientific research, production, trade and finance as a whole. The registered capital of ECC is RMB 10.3 million and the total asset comes to RMB 500 million. As a matter of fact, ECC products may be divided into more than 300 series with more 5000 specifications.

ECC headquarters is located in the Global New Times Plaza on 1666 Sichuan Road North in urban of Shanghai. Its high-tech industrial zone is located in Pudong on the outskirts of Shanghai, occupying a land area of more than 150 thousand square meters. ECC owns 12 core enterprises including the Shanghai Renmin Electrical Power Equipment Co., Ltd, Shanghai Renmin Low Voltage Apparatus Co., Ltd, Shanghai Hongkou China-science Petty Loan Stock Co., Ltd, Shanghai China-science Electric Group Investment Co., Ltd etc., more than 80 member enterprises, 300 sub-suppliers and

more than 500 selling organizations throughout domestic area. ECC introduced into a series of internationally advanced machining equipments, including AMADA digital controlled metal sheet machining line from Japan, Welding Robots from Japan OTC company, Laser cutting machine from Switzerland and TOX metal sheet riveting machine and vertical machining center from Germany etc. In recent years, ECC has completed hundreds and thousands state large and middle-sized projects in high quality and efficiency, such as National Petro-chemical, National Petroleum, Daging Oil Field, Shanghai Astronautic City, Bao Steel Group, Guangzhou University City, Zhengzhou International Exhibition Center, West gas transferred to East project, Shanghai Expo and so on.

ECC is Matching Units for National Electro-Mechanic Equipment in Grade A, Recommended Enterprises for Urban and Rural Electric Power Network Renovation by National Economy and Trade Commission, Designated Suppliers for Projects subordinated to National Water Conservative Ministry, Coal Ministry and National Electric Power Co., Members of National Professional Organizations such as China International Invitation of Bid Web Network. ECC has been granted many certifications and reputations from authorities concerned such as China National Contract Credit and Trustworthy Enterprise, China National Non-Governmental Sci-Tech Enterprise Innovation Prize, China Excellent Non-Governmental Sci-Tech Enterprise, Shanghai Municipal Hi-tech Enterprise, Shanghai Municipal Sci-Tech Little Giant Enterprise, Shanghai Sci-tech Innovation Enterprise, Shanghai Municipal Top 100 Excellent Enterprises of Contract Credit, Triple A Grade Banking Qualification Certificate, Shanghai Large-Scale Group, Shanghai Implementation of Performance Excellence Advanced Enterprise, Shanghai Model Unit and so on. Meanwhile, ECC Board Chairman and President Chen Qingqian has been appraised as China National Excellent Non-Governmental Sci-tech Entrepreneur, Shanghai Municipal Excellent Socialist Constructor with Chinese Characteristics, Shanghai Excellent Entrepreneur for Implementation of Invention and granted Shanghai Sci-tech Entrepreneur Innovation Prize for many years.

ECC seeks high quality for basic existence all time, promoting total quality control and fruitful achievement appraisal formally and perfecting quality management system ceaselessly. Eventually, ECC was granted ISO 9001 Quality Certificate, ISO 14000 Environment Healthy Certificate, GB/T28001-2001 Professional Healthy and Safety System Certificate and CCC (China Compulsory Confirmation) Certificate for the first of its kind in the same industry. ECC product is appraised as Shanghai Municipal Famous Product, Famous and Excellent Product in Shanghai Municipal Electric Apparatus Industry for four consecutive years. ECC Technical Center has been regarded as Shanghai Municipal Enterprises Technical Center by Shanghai Municipal Economical Committee.

Taking active measures to expand international cooperation, ECC has established all round relationships through signature of contracts with world top 500 enterprises such as GE Electric in USA, Applied Materials Inc. in USA, Schneider in France, ABB in Switzerland, ABMC, Kongsberg Maritime in Norway, SK company in the field of marketing, technology, product etc.

ECC takes an active part in charities, such as contributes for Shanghai 4050 Re-employment Project, provide help to the poverty and the handicapped, and the big earthquake in Wenchuan City Sichuan Province. Therefore, ECC is granted as Advanced unit of Love Project and Gold Medal of Shanghai Municipal Charitable Foundation.

ECC insists on a business concept of "taking human resource as basic and sci-tech as lead"; to accelerate global march for realization of modernization in management, intelligence orientation in product development, and internationalization in business, and then opens up a new prospect for the sci-tech renovation and makes contribution to the Shanghai economic development.





董事长兼总裁：

陈义钺

中国优秀民营科技企业家  
上海市优秀中国特色社会主义建设者  
上海市工商业联合会执委  
上海市虹口区政协委员

# 总裁致辞

P R E S I D E N T

A D D R E S S

面对新世纪信息革命经济全球化的浪潮，中科人决心立足实业，大胆改革，以睿智的目光，博大的胸怀，迎接和挑战新一轮发展机遇。

中科坚持“以人为本、科技领先”的经营理念，紧紧把握世界先进科技发展脉搏，追求卓越，精益求精，以一流的品牌，一流的技术，一流的服务为振兴民族工业写就辉煌篇章！

同时热忱欢迎国内外各界朋友与集团携手合作，共图发展！

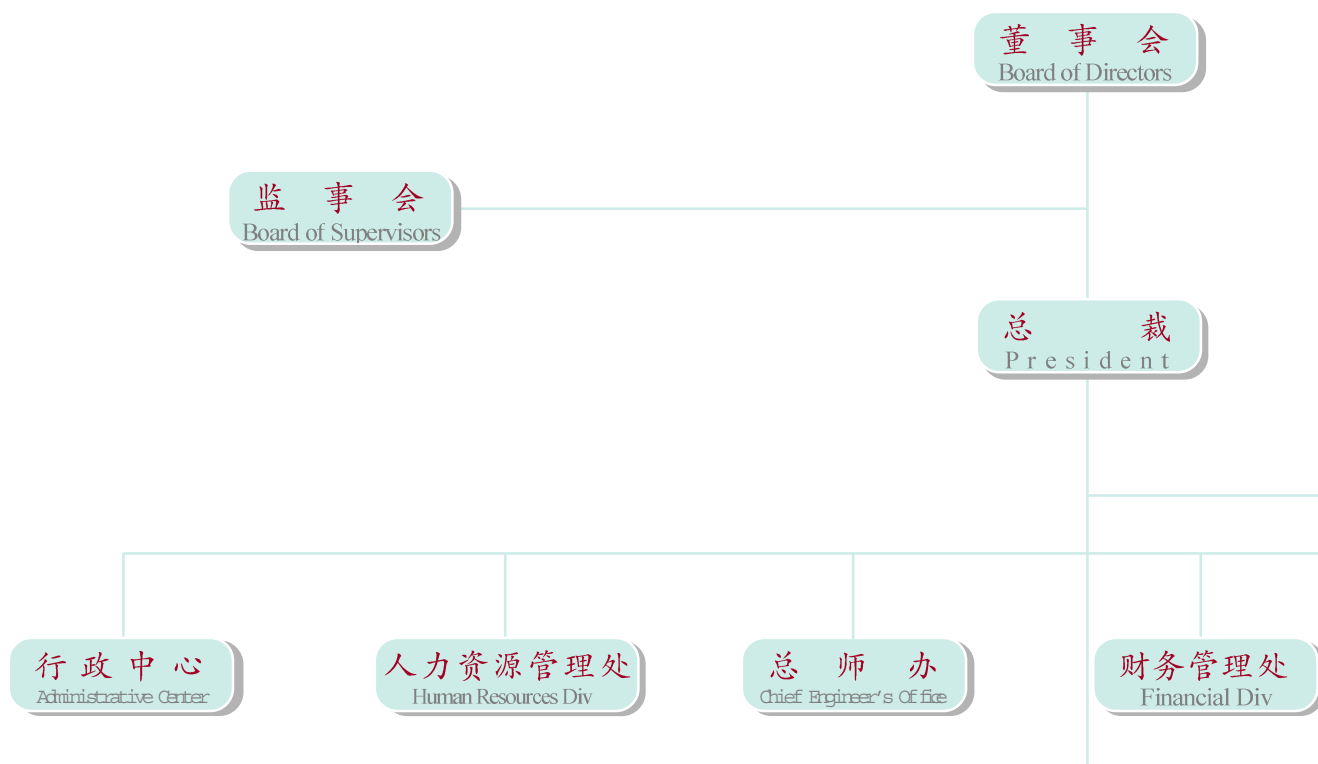
Facing the tide of globalization of new millennium information revolution and economics, ECC people have made their mind to stand on industrial and commercial base with intrepid renovation, usher in and challenge a new round of development opportunity with sagacious view and generous breast.

With a business idea of "taking human being as base of sci-tech as lead, we will grasp firmly the pulse of world advanced scientific and technological development and always stand on a foreland of the contemporary science and technology. Seeking perfection and excellence, we are now offering first rate brand, first rate technology and first rate service to the society for the purpose of renewal brilliant chapter in blossom of national industry.

We warmly welcome our friends and groups from all walks of life both at home and abroad to make cooperation with ECC for bilateral development and prosperity.

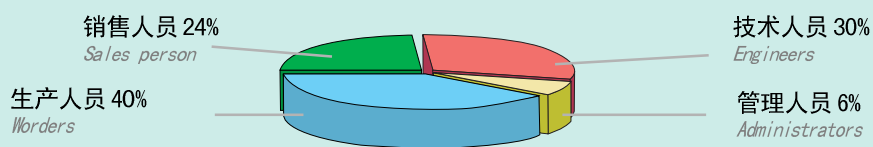
# 组织机构

## ORGANIZATION STRUCTURE



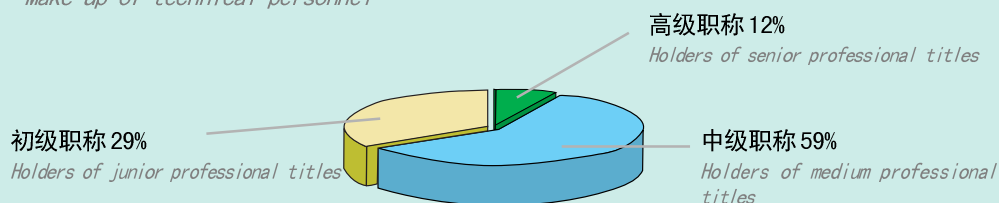
### 员工结构

The Make-up of ECC staff and workers



### 专业人员结构

Make-up of technical personnel



上海人民电力设备股份有限公司

上海人民低压电器有限公司



“茂枝盛叶、始于根本”。科学的组织机构是  
中科事业迅速发展的基础，也是集团健康发展的有力  
保障。

“The flourishing branches and leaves begin from a root.”  
The scientific organization is not only the basis of a rapid  
development for China-Science cause, but also a power-  
ful assurance of ECC healthy development.

企业发展战略委员会

Enterprise Development Strategic Commission

精神文明建设委员会

Spirit Civilization Construction Commission

质量监督委员会

Quality Supervision Commission

制度检查委员会

System Inspection Commission

市场销售管理处

Marketing Div

国际贸易管理处

International Trade Div

国内贸易管理处

Domestic Trade Div

资产与装备管理处

Asset & Equip. Div.

上海中科电气集团开关有限公司

上海大众矿山电器有限公司

上海新联电缆有限公司

上海中科电气集团投资有限公司

上海华电变压器有限公司

上海国电钣金制造有限公司

上海中科电气集团自动化研究所

浙江中科机电有限公司

# Q 资质荣誉

## QUALIFICATION & REPUTATION





中国优秀民营科技企业

*China Excellent Non-governmental Sci-tech Enterprise*

上海市大企业集团

*Certificate of Shanghai Large Scale Enterprise Group*

上海市高新技术企业

*Confirmation of New and Hi-tech Enterprise in Shanghai*

国家甲级机电设备成套单位

*Certificate of National Top Level Electromechanical Equipments*

上海名牌产品

*Shanghai Municipal Famous Brand Product*

上海电器行业名优产品

*Famous and Excellent Product in Shanghai Electric Apparatus Industry*

上海市免检企业

*Shanghai Municipal Certification of Inspection Exempted Enterprise*

进出口企业资格

*Certificate of Exp & Imp Enterprise*

A类纳税信用等级

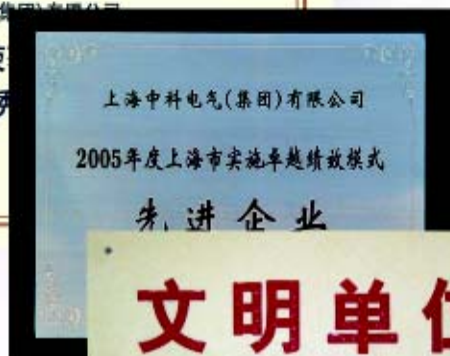
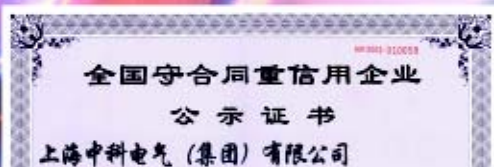
*Certificate of Level A Trust in Tax Paying*

全国守合同重信用企业

*National Certification of Contract Credit Enterprise*

全国城乡电网改造推荐企业

*Appointed Enterprise for Renovation of Urban and Rural Electric Power Supply Network by China National Economic and Trade Commission*





**P** 生产基地  
PRODUCTIVE BASE



高科技工业园  
ECC High Sci-tech Garden





**P** 生产基地  
PRODUCTIVE BASE





高科技工业园鸟视图  
ECC High Sci-tech Garden





# 工装设备

## Machine Tools & Equipment

集团浦东工业园区和高科技园区位于上海浦东沪南路和申江路，占地 15 万平方米。拥有国际先进的日本 AMADA 数控钣金加工生产线，激光切割机，OTC 公司焊接机器人、瑞士激光切割设备，德国 TOX 钣金铆接机及立式加工中心等一系列现代化的高精度生产设备。

Occupying a land area of 150000 square meters, ECC Pudong Industrial Garden and High Sci-tech Garden are located at Hunan Road and Shenjiang Shenjiang Road, Pudong, Shanghai respectively. We possess a series of modern and high accurate productive devices such as a world advanced AMADA digital controlled metal sheet machining and productive line introduced from Amada, Japan, a laser cutting equipment, a welding robot introduced from IS Company, France, TOX Metal Sheet Riveting Machine from Germany, a vertical machining center and many others.







## 技术与品质 | TECHNOLOGY & QUALITY

集团采用国际先进的 CAD, CAM 辅助设计系统, 规范推进 ERP 系统和全面质量管理, 对生产实行全程监控。



With CAD and CAM computer oriented system, ECC has greatly improved ERP system and total quality control to practice all-round course supervision in production.





# S 科技创新 SCIENTIFIC & TECHNOLOGICAL RENOVATION



IDCS2000 智能型低压开关柜  
Intelligent Type Low Voltage Cbicle

集团坚持以科技为先导的企业发展战略，形成了以自身技术人员为主，以新产品开发中心，计算机配套设计中心，电气自动化研究所为核心，以著名高校为依托的技术创新体系。

Taking science and technology as a lead in an enterprise development strategy, ECC has formed a technological renovation system with technological personnel as major human resource, new product development center, CAD design center and electric automation R&D as core power, and famous universities as relying force among others.



KYN28A-24  
金属铠装中置移开式开关柜  
Metal-clad Central-located Withdrawout Cbicle



驾驶室集中控制台  
Wheel house group control console



船舶低压配电柜  
Indoor Medium Voltage Vacuum Circuit Breaker





研发中心 R&D Center

- ▶ 中国科学院  
Chinese Academy of Sciences
- ▶ 国家电力自动化研究院  
National Electric Power Automation Research Institute
- ▶ 中国电力企业联合会龙源电气联合体  
Longyuan Electric Federation of China Electric Power Enterprise Confederation
- ▶ 天津电气传动研究所  
Tianjin Electric Transmission Research Institute
- ▶ 西安高压电器研究所  
Xi'an High Voltage Apparatus Research Institute
- ▶ 上海电器科学研究所  
Shanghai Electric Apparatus Science Research Institute
- ▶ 复旦大学  
Fudan University
- ▶ 上海交通大学  
Shanghai Jiaotong University



## 国际合作

International Cooperation



集团积极开展国际合作，与美国通用电气公司建立了技术、生产、市场的全面战略合作伙伴关系，还与美国应用材料公司、德国西门子公司，法国施耐德公司，瑞典ABB公司、法国AREVA公司等世界500强企业建立了紧密的合作关系。



Always take active measures to expand international cooperation, ECC has established all round strategic relationships with GE Electric in USA in fields of technology, production, marketing and others. Besides, ECC has also establish close cooperation with other world top 500 enterprises such as Applied Materials Inc. in USA, Siemens in Germany, Schneider in France, ABB in Sweden, Areva in France and so on.







**Schneider**  
Electric

**ABB**

**SIEMENS**



美国应用材料公司全球合格供应商

Global Approved Supplier Certificate by Applied Materials, Inc. USA



GE 授权 OEM 合作伙伴

GE Authorized OEM Cooperative Partner

- ▲ 美国硅谷办事处  
American office of Silicon Valley
- ▲ 沙特办事处  
Saudi Arabia office of Silicon Valley
- ▲ 香港办事处  
Office of Hong Kong  
.....



集团把营销网络作为战略资源，在全国31个省市自治区以及香港、东南亚和中东等地区，设立了500多家销售公司和办事机构。

ECC Group has established more than 500 sales companies and offices throughout 31 provinces and autonomous regions in domestic areas, Hong Kong, Southeast Asia, Middle East and others.



# M 营销网络

Marketing Network

## P 各地部分营销机构:

parts of organizations

上海	北京	广州	香港	重庆	南京	成都	天津
深圳	武汉	烟台	西昌	南昌	郑州	合肥	昆明
开封	桂林	潍坊	南宁	宜昌	焦作	淮北	东营
扬州	徐州	大庆	贵州	济宁	泰安	唐山	太原
合肥	洛阳	吉林	泉州	大同	南阳	贵阳	包头
呼和浩特	乌鲁木齐	银川	西宁	敦煌	鄂尔多斯		
柳州	兰州	济南	金华	岳阳	昆山	高密	长治
南通	西安	新乡	邯郸	太仓	杭州	常州	绍兴
枣庄	株洲	海口	宁波	临汾	新余	邢台	无锡
长沙	长春	淄博	江阴	九江	青海	芜湖	拉萨
黄石	温州	青岛	格尔木	马鞍山	保定	唐山	
秦皇岛	平顶山	佳木斯	石家庄	连云港	哈尔滨		
沧州	承德	廊坊	衡水	迁安	鹿泉	南宫	任丘
涿州	阳泉	晋中	运城	晋城	忻州	吕梁	高平
赤峰	乌海	通辽	集宁	沈阳	大连	盘锦	鞍山
本溪	铁岭	丹东	抚顺	辽阳	阜新	朝阳	营口
通化	白城	四平	辽源	松原	白山	双辽	延边
鸡西	黑河	伊春	海林	富锦	张家口	牡丹江	……

## 服务 Service

公司始终坚持“**用户至上、信誉第一**”的服务宗旨，竭诚为广大用户提供最优良的产品、最先进的技术和最周到的服务。

公司技术力量雄厚，热情提供各项技术咨询，可以根据用户需要参与前期设计工作，为优化设计、降低工程成本、提高工程质量服务。

Insisting on the service motto of "Customer utmost and reputation first", ECC is willing to provide our customers with the best products, the most advanced technology and the thoughtful after-sale service.

With powerful technical strength, ECC is eager to supply various technical consultancy, taking part in pro-stage design as per requirements from our customers. In a nutshell, we will work hard and fruitfully to optimize design, reduce cost and boost engineering quality.





- ★ 派员到场参与货物验收移交，协助进行安装调试；
- ★ 对用户进行技术培训；对设备运行期的技术支持，并保证提供所需的备件等。
- ★ 在保质期间如若发现产品质量问题，我公司将负责排障处理；接到用户要求解决产品问题的通知后，12 小时内作出答复；若需现场解决，在 24 小时内派出专业技术服务人员，并做到质量不解决人员不撤离。
- ★ 质保期过后，公司将终身提供技术咨询，培训、及时上门维护和维修服务、定期巡访用户等。

- ★ ECC sends for qualified persons to take part in activities of product acceptance and taken over, to help users in installation and regulation.
- ★ Responsible for technical trainings to users, technical support when in operation and provision of desired spare parts.
- ★ If a product quality problem is found within warranty period, ECC will be responsible for the solution in this way: From the time when we receive the notice of solution requirement on quality problem, we will give out response within 12 hours. If it is needed to solve the problem at site, we will send for qualified technical service people within 24 hours to the site and we will not withdraw such people at site until the quality problem is successfully solved.
- ★ After warranty period, ECC will provide technical consultation and training courses all time. We will go to users' for maintenance and reparation and perform petrol visits for after service.





IDCS2000  
智能型低压开关柜  
*Intelligent Type Low Voltage Cubicle*



ECC-MNS  
低压抽出式开关柜  
*Low Voltage Withdrawal Cubicle*



ECC-GCK  
低压抽出式开关柜  
*Low Voltage Withdrawal Cubicle*



PZD2 (W)  
系列智能高频开关直流电源屏  
*Intelligent Type High Frequency Switching DC Power Supply Panel*



ECC-GCS  
低压抽出式开关柜  
Low Voltage Withdrawal Cubicle



ECC-GHT  
低压抽出式开关柜  
Low Voltage Withdrawal Cubicle



ECC-GGD  
交流低压固定式开关柜  
AC Low Voltage Fixed Type Cubicle



PML1 . PJ1 . PJ2  
电能计量柜  
Electric Power Metering Cubicle





IDCS2000  
智能型高压开关柜  
*Intelligent Type High Voltage Cabinet*



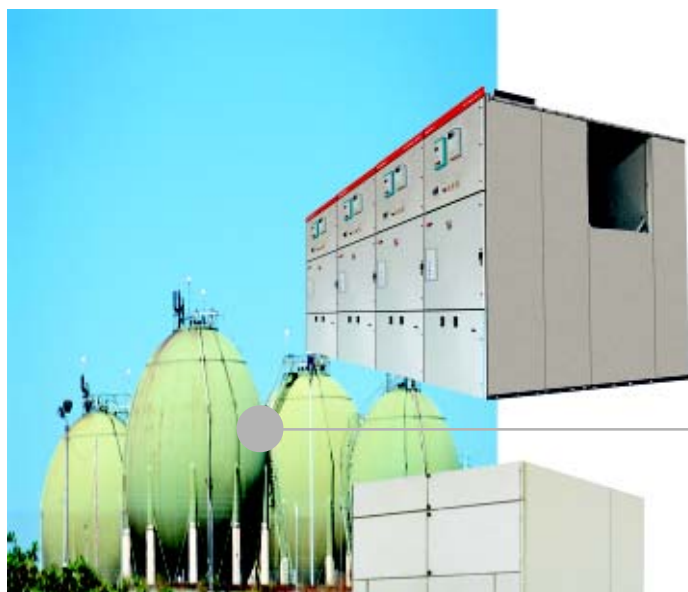
KYN18A-12  
交流金属铠装移开式开关柜  
*AC Metal-clad Withdrawal Cabinet*



KYN28A-12  
金属铠装中置移开式开关柜  
*Metal-clad Central-located Withdrawal Cabinet*



XGN2-10  
固定式金属封闭开关柜  
*Fixed Type Metal-Enclosed Cabinet*



KYN61-40.5  
金属铠装移开式高压开关柜  
*Metal-clad Withdrawout High Voltage Cubicle*



JYN-35  
金属封闭移开式高压开关柜  
*Metal-enclosed Withdrawout High Voltage Cubicle*



KYN-10  
金属铠装移开式高压开关柜  
*Metal-clad Withdrawout High Voltage Cubicle*



HXGN15-12  
封闭式金属开关柜(SF<sub>6</sub> 环网柜)  
*SF<sub>6</sub> Ring Main Unit Cubicle*

**KYN28A-24**  
**金属铠装中置移开式开关柜**  
*Metal-clad Central-located Withdrawal Cubicle*



**XBZ1-12**  
**非金属环保型智能箱式变电站**  
*Non-metal Environmental Protection Package Substation*



**DXB(W)-10**  
**户外箱式变电站**  
*Outdoor Package Substation*



**PDJHK**  
**低压智能分相无功功率补偿柜**  
*LV Intelligent Phase Separated Compensating Cubicle*







各式动力箱、照明箱

*Various Power Boxes and Lighting Boxes*



户外组装式变电站(美式)

*Outdoor Combination Substation*



DFW-12  
户外高压电缆分接箱

*Outdoor High Voltage Cable Marshalling Box*

干式变压器

*Dry Type Transformer*



## GEApplus2.0 低压开关柜

Low Voltage Withdrawout Cubicle



## Modula Plus 全系列标准低压配电柜

Low Voltage Withdrawout Cubicle



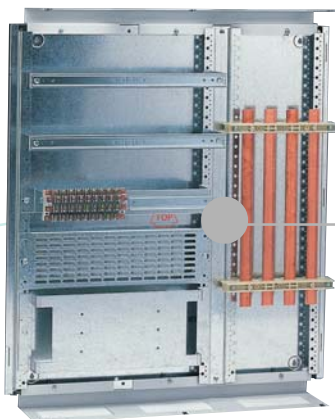


OEM 产品

**ECC**  
China-Science



Modula 630K 全系列标准低压配电柜  
Low Voltage Withdrawout Cubicle





### 船舶低压配电柜

*Indoor Medium Voltage Vacuum Circuit Breaker*



### 驾驶室集中控制台

*Wheel house group control console*



### 分电箱、启动箱、组合启动屏、自动控制箱

*Distribution board, start box, group start panel, automatic start control box*







ZN85-40.5  
户内中压真空断路器

*Indoor Medium Voltage Vacuum Circuit Breaker*

ZN65A-12  
户内中压真空断路器

*Indoor Medium Voltage Vacuum Circuit Breaker*



FZW13 (A) -12/T630  
户外中压真空断路器

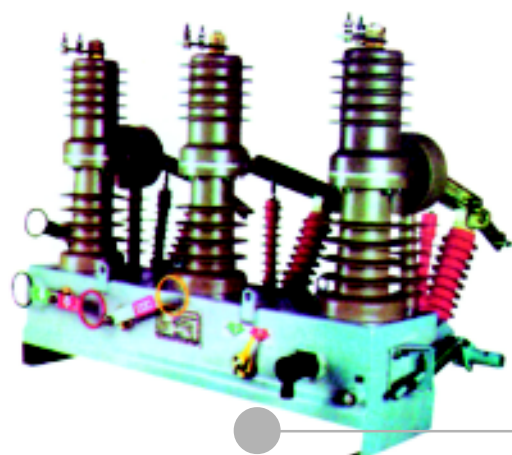
*Outdoor Medium Voltage Vacuum Circuit Breaker*

ZW7-40.5  
户外中压真空断路器

*Outdoor Medium Voltage Vacuum Circuit Breaker*







ZW32-12  
户外中压真空断路器  
*Outdoor Medium Voltage Vacuum Circuit Breaker*



ZW8-12  
户外中压真空断路器  
*Outdoor Medium Voltage Vacuum Circuit Breaker*



ZW8-12T  
户外中压真空断路器  
*Outdoor Medium Voltage Vacuum Circuit Breaker*

VS1  
户内中压真空断路器  
*Indoor Medium Voltage Vacuum Circuit Breaker*



## 低压电器、防爆电器、 *Low Voltage Apparatus, Explosion-proof Apparatus*



ECCM1  
系列塑壳式断路器  
*Molded Case Circuit Breaker*





## 仪器仪表、电线电缆

*Instruments, Meters, Wires and Cables*



ECW1  
系列智能型万能式断路器  
*Intelligent Type Air Circuit Breaker*





# 重大工程项目

## REFERENCES





1. 上海浦东国际机场
2. 解州铝厂
3. 上海世博文化中心
4. 广州大学城
5. 北京印钞厂

6. 洛阳双瑞万基钛业有限公司
7. 郑州新国际机场
8. 北京钓鱼台国宾馆
9. 郑州国际会展中心
10. 上海航天城
11. 上海交通大学





# 重大工程项目

## REFERENCES







4



8

1. “西气东输”工程上海段
2. 宝钢集团
3. 洋山深水港
4. 上海虹桥国际机场
5. 阜阳华润发电厂



5



6

6. 大庆油田
7. 上海石洞口电厂
8. 江西景德镇第四水厂


7



# P 展望未来 rospect the future

**集** 团以电气业为核心，继续沿着多元化、科技化的发展方向前进，在不断进行机制创新，技术创新，管理创新的实践中，把中科打造成为规模化，品牌化，国际化的现代跨国企业。





Taking the electric industry as a core, we are continuously marching forward along the developing orientation of multiplication, science and technology during the practice of ceaseless systematic renovation, technical renovation and management renovation for purpose of creating ECC a modern transnational enterprise in globalization, scale and brand orientation.

the future



总 部:上海市四川北路1666号高宝新时代广场9楼

总 机:021-63568888 传 真:021-63252222

浦东工业园:上海市沪南路3738号

高科技工业园:上海市新坦瓦公路1383号

Http: // [www.eccgroup.com.cn](http://www.eccgroup.com.cn)

E-mail: [ecc@eccgroup.com.cn](mailto:ecc@eccgroup.com.cn)

欲知更多系列产品, 请点击 [www.eccgroup.com.cn](http://www.eccgroup.com.cn) 或电话: 021- 63257711